



9 Stephens Place

Broadwell, Coleford, GL16 7BJ

£359,950

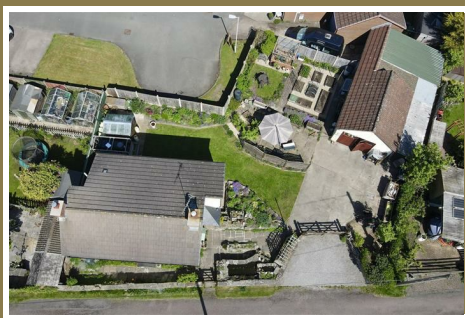


VIRTUAL TOUR AVAILABLE Dean Estate Agents are excited to bring to the market this rarely available, attractive character cottage set in a fantastic, quiet location in Broadwell. Dating back to the 1800s, this detached cottage has been lovingly cared for by the current owners for over 40 years.

The generous ground floor perfectly blends modern living with original character features, offering a modern kitchen/dining room ideal for family life, a cosy lounge with multifuel burner and exposed wooden beams, and a separate utility room. Upstairs, there are three beautifully presented bedrooms and a stylish family bathroom with both a separate bath and shower.

Outside, the property is approached via a gated driveway providing ample parking for multiple vehicles, leading to a large garage incorporating a workshop and W.C. The beautiful gardens are a real feature, including a vegetable patch and a patio area perfect for seating and outdoor entertaining.

Stephens Place is situated in Broadwell where you will find woodland walks on your doorstep and plenty local amenities such as convenience stores, free houses, a social club and great bus links.



Approached via UPVC double glazed front door into:

Lounge:

12'6" x 10'11" (3.83m x 3.33m)

UPVC double glazed window, double panelled radiator, multi fuel burner, tv point, power and lighting.

Kitchen/Dining Room:

12'0" x 18'4" (3.68m x 5.59m)

Kitchen:

A range of modern units with one and a half bowl Belfast sink unit, 4 ring induction hob, double integrated oven, extractor hood, space for fridge/freezer, UPVC double glazed window, power and lighting.

Dining Room:

UPVC double glazed window, multi fuel burner with brick surround, power and lighting.

Utility Room:

11'2" x 5'8" (3.41m x 1.75m)

A range of base and full length units, space and plumbing for washing machine, space for fridge/

freezer, door to garden, double panelled radiator, UPVC double glazed window, power and lighting.

First Floor Landing:

UPVC double glazed window, storage cupboard, loft access, single panelled radiator, smoke alarm, lighting.

Bedroom One:

11'0" x 9'8" (3.37m x 2.97m)

UPVC double glazed window, double panelled radiator, feature fireplace, power and lighting.

Bedroom Two:

12'0" x 6'9" (3.68m x 2.07m)

UPVC double glazed window, double panelled radiator, power and lighting.

Bedroom Three:

9'3" x 8'11" (2.83m x 2.72m)

UPVC double glazed window, single panelled radiator, power and lighting.

Bathroom:

7'10" x 6'11" (2.41m x 2.11m)

Modern bathroom suite with corner shower, vanity sink unit, bath with shower over, W.C, extractor

fan, heated towel rail, UPVC double glazed window, lighting.

Garage:

17'3" x 14'1" (5.28m x 4.31m)

Side hinged garage door, windows to side, workshop to rear with W.C., power and lighting.

Workshop:

11'8" x 5'8" (3.56m x 1.73m)

W.C.:

5'10" x 2'5" (1.80m x 0.76m)

Outside:

A generous plot with gated access leading to a driveway for multiple vehicles. The beautifully designed garden is an oasis with a lawned area, patio area perfect for seating and entertaining, there is a gorgeous range of bushes, shrubs and flowers. There is a separate section with a vegetable patch and greenhouse.



Consumer Notes: Dean Estate Agents Ltd have prepared the information within this website/brochure with care and co-operation from the seller. It is intended to be indicative rather than definitive, without a guarantee of accuracy. Before you act upon any information provided, we request that you satisfy yourself about the completeness, accuracy, reliability, suitability or availability with respect to the website or the information, products, services, or related graphics contained on the website for any purpose.

These details do not constitute any part of any Offer, Contract or Tenancy Agreement.

Photographs used for advertising purposes may not necessarily be the most recent photographs, although every effort is made to update photographs at the earliest opportunity. Any reliance you place on such information is therefore strictly at your own risk. All photographic images are under the ownership of Dean Estate Agents Ltd and therefore Dean Estate Agents retain the copyright. You must obtain permission from the owner of the images to reproduce them.

Tenanted Property – we are not always able to show the most recent condition of a property due to tenants' privacy and we may choose to show the photographs of the property when it was last vacant to at least allow clients some idea of the internal condition. Therefore, we would of course, urge you to view before making any decisions to purchase or rent the property and before any costs.

Energy Performance Certificates are supplied to us via a third party and we do not accept responsibility for the content within such reports.

PRC Certificates – Some ex-local authority properties have been repaired in recent years using the PRC Scheme wherein a certificate has been produced by a qualified property engineer. This certificate does not imply the suitability for a mortgage approval and you must satisfy yourself of the work carried out that may meet your lenders criteria.

As with leasehold property or new build development sites, you are likely to be responsible for a contribution to management charges and/or ground rent or a contribution to the development service charge. Please enquire at the time of viewing.

You may also incur fees for items such as leasehold packs and, in addition, you will also need to check the remaining length of any lease before you complete a mortgage application form. Please ask a member of our team for any help required before committing to purchase a property and incurring expense.

Road Map



Hybrid Map



Terrain Map



Floor Plan

Floor 0 Building 1

Floor 1 Building 1

Floor 0 Building 2

Approximate total area⁽¹⁾

1206 ft²
112 m²

Reduced headroom

10 ft²
1 m²

(1) Excluding balconies and terraces

Reduced headroom
..... Below 5 ft/1.5 m

While every attempt has been made to ensure accuracy, all measurements are approximate, not to scale. This floor plan is for illustrative purposes only.

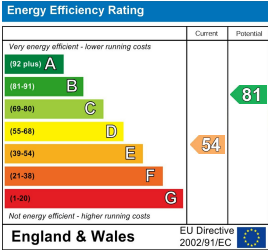
Calculations were based on RICS IPMS 3C standard. Please note that calculations were adjusted by a third party and therefore may not comply with RICS IPMS 3C.

GIRAFFE360

Viewing

Please contact our Coleford Office on 01594 835751 if you wish to arrange a viewing appointment for this property or require further information.

Energy Efficiency Graph



These particulars, whilst believed to be accurate are set out as a general outline only for guidance and do not constitute any part of an offer or contract. Intending purchasers should not rely on them as statements of representation of fact, but must satisfy themselves by inspection or otherwise as to their accuracy. No person in this firms employment has the authority to make or give any representation or warranty in respect of the property.

